

Anti-H_SLC34A2 hIgG1 Antibody(XMT-1536)

Product information

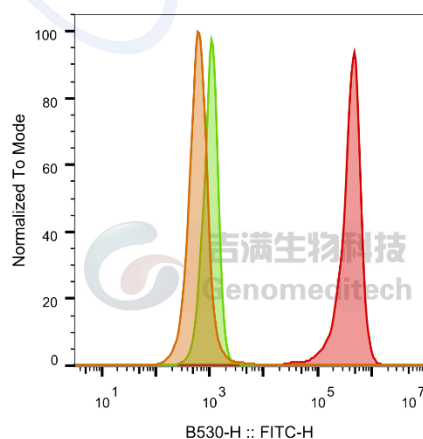
GM-26828AB-10	10 µg
GM-26828AB-100	100 µg
GM-26828AB-1000	1 mg

Antibody Information

Species Reactivity	Human;Cynomolgus;Mouse;Rhesus
Clone	XMT-1536
Source/Isotype	Monoclonal human IgG1, κ
Application	Flow cytometry;
Other Names	NAPI-3B, NAPI-IIb, NPTIIb, PULAM
Gene ID	O95436-1(Human);Q9DBP01(Mouse); XP_005554673(Cynomolgus);XM_001082788.4 (Rhesus)
Storage	Store at 2-8°C short term (1-2 weeks).Store at ≤ -20°C long term. Avoid repeated freeze-thaw.
Formulation	Phosphate-buffered solution, pH 7.2.
Endotoxin	< 1 EU/mg, determined by LAL gel clotting assay

Data Examples

Flow cytometry H_SLC34A2 HEK-293 Cell Line (Catalog # GM-C13321) was stained with Anti-H_SLC34A2 hIgG1 Antibody(XMT-1536) or isotype control antibody.



SampleID	Geometric Mean : B530-H
HEK-293 anti-H_SLC34A2+FITC-2nd Ab	634
HEK-293 H_SLC34A2 H_IgG+FITC-2nd Ab	1046
HEK-293 H_SLC34A2 anti-H_SLC34A2+FITC-2nd Ab	385514

Fig. FACS

Version:0.3.2.240521

Flow cytometry

Mouse_SLC34A2 HEK-293 Cell Line (Catalog # GM-C21238) was stained with Anti-H_SLC34A2 hlgG1 Antibody(XMT-1536) or isotype control antibody.

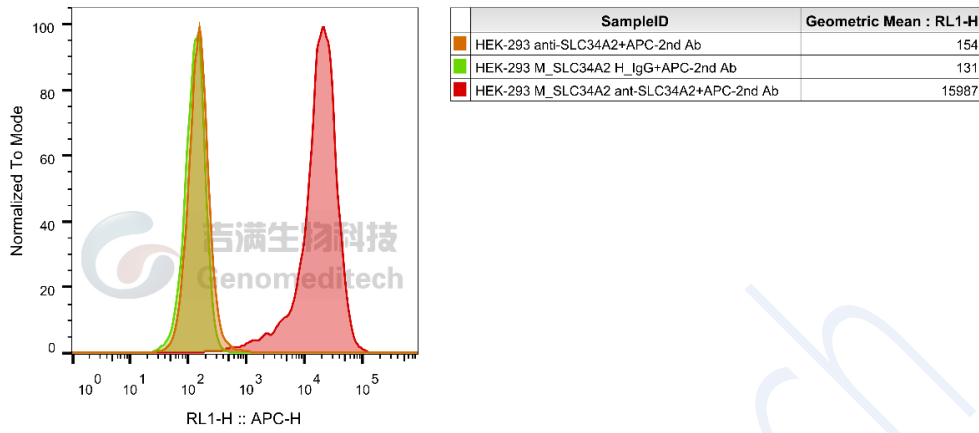


Fig. FACS

Flow cytometry

Cynomolgus_SLC34A2 CHO-K1 Cell Line (Catalog # GM-C15490) was stained with Anti-H_SLC34A2 hlgG1 Antibody(XMT-1536) or isotype control antibody.

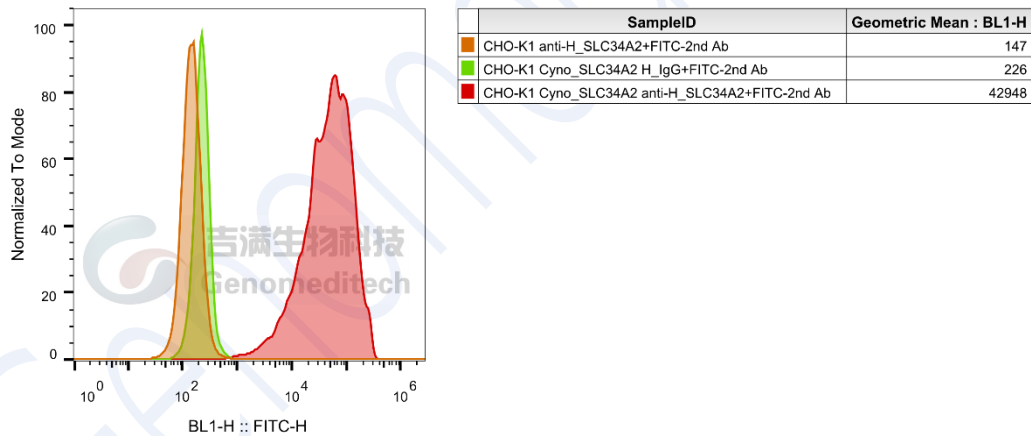
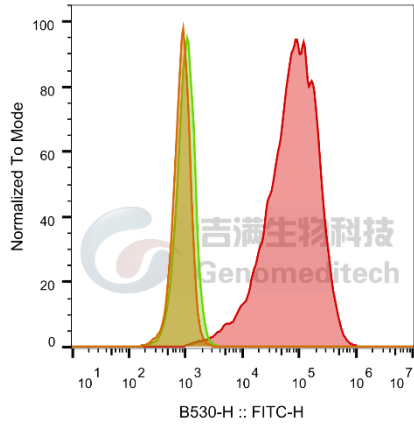


Fig. FACS

Flow cytometry

Rhesus_SLC34A2 CHO-K1 Cell Line (Catalog # GM-C13371) was stained with Anti-H_SLC34A2 hlgG1 Antibody(XMT-1536) or isotype control antibody.



SampleID	Geometric Mean : B530-H
CHO-K1 anti-H_SLC34A2+FITC-2nd Ab	882
CHO-K1 Rhesus_SLC34A2 H_1gG+FITC-2nd Ab	1020
CHO-K1 Rhesus_SCL34A2 anti-H_SLC34A2+FITC-2nd Ab	72187

Fig. FACS

Genomeditech